



UNIVERSITY
OF HULL

HULL 
SPORT

FACILITY & EVENT GUIDE



CONTENTS

Travel & Transport	2
Training Venues & Facilities	3-7
Accommodation & Catering	8-10
Outreach	11-12
Previous Events & Elite Partners	13-16
Project Management & Staffing	17-19
Hull Sport Policies	20-22
Pricing Information	23
Appendix	25-29

INTRODUCTION

The University of Hull, official University partner of Team GB, recently invested £17m in to Sport Facilities on Campus to create Hull Sport Park. A World Class sporting environment to support the development of students, local community members and elite athletes.

Since completion of facilities many of our existing and also new partnerships have flourished which has seen the delivery of both local and global events ranging from Regional College competitions to the Allam British Squash open with a global viewership of 11 million.

The connectivity of hosting all of our facilities in one location gives us the ability to create a holistic programme factoring in access to international standard sport facilities with accommodation and catering provisions less than 200m from Hull Sport Park.

TRAVEL & TRANSPORT

Easy access, wherever you are

Our location – about halfway between London and Edinburgh – puts us within pretty convenient distance of most parts of the UK. Hull's road, rail, air and sea links are so good that students can easily get to us from all over the country, and in fact from all over the world.



RAIL

There are regular direct trains from London, taking as little as two and a half hours. There's fast, direct access from northern England and Scotland, while destinations to the west are also well connected.

OVERSEAS

If you're coming from further afield, daily ferries connect Hull to the Netherlands and Belgium, while Humberside Airport links to the world via Amsterdam Airport Schiphol. Manchester, Leeds-Bradford and Doncaster-Sheffield airports can also be reached easily from here.

**HULL TO
LONDON**



190 MILES



**2.5 - 3 HRS
BY RAIL**

TRAINING VENUES & FACILITIES

THE ARENA

- Retractable bleacher style seating for 750
 - 12 badminton courts
 - 3 separate areas with markings for competitive play for
 - Badminton
 - Basketball (FIBA approved)
 - Netball
 - Volleyball
 - Futsal
- The area can also be used as a flat floor space for various other matted activities
- The Arena can also be opened up to allow one flat floor space (71m x 36m)
- Access to 3 phase power allowing multiple applications of the space including stages, sound systems and catering units
- Programmable exterior lighting to welcome your guests and athletes
- Private treatment room

Detailed floor plans of facilities provided in Appendix





SQUASH COURTS

Hull Sport Park is the home of the Allam British Open and English Junior Squash Championships boasting 6 international standard glass back squash courts.



STUDIOS

3 versatile exercise studios create an area to accommodate various activities such as:

- Martial Arts
- Boxing
- Row
- Dance
- Yoga



All of our studios are fully equipped with audio capabilities and power. The largest of our studios is often used to create a bespoke cafe lounge for an events special guests.



Detailed floor plans of facilities provided in Appendix

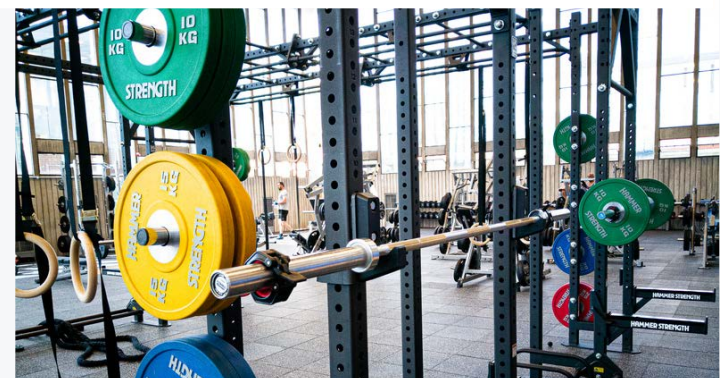
FITNESS SUITE

Hull Sport Park has two fitness facilities tailored to meet the requirements of beginners and elite athletes alike.

Our fitness suite is accessible to students, staff and our local community and has a range of equipment to suit various training methods.

120 station fitness facility consisting of:

- 7 squat racks
- 3 lifting platforms
 - Olympic bars
 - Bumper plates
- Dumbbells upto 50kg
- Plate loaded resistance machines
- Functional fitness space
 - Ski ergs
 - Assault Bikes
- Stretching and relaxation area



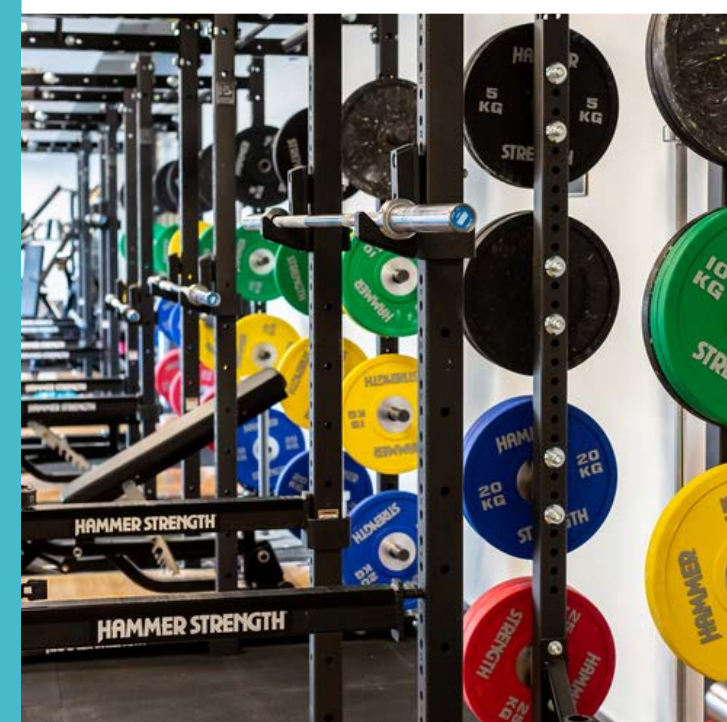
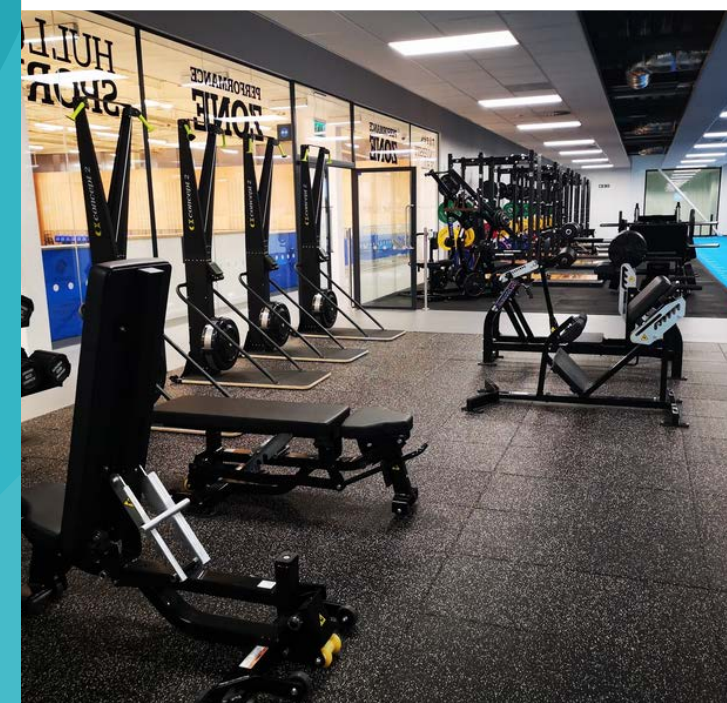
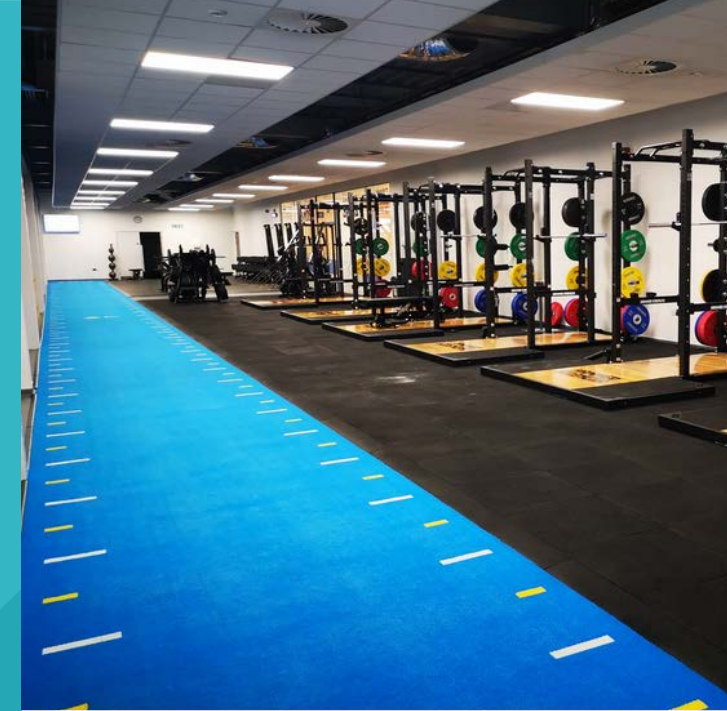
PERFORMANCE ZONE

The Hull Sport Performance Zone is a purpose built private space created under consultation from professional Strength and Conditioning coaches to create the perfect environment for aspiring and elite athletes to thrive.

The Performance Zone can be accessed individually or hired as a completely private space for your group or event.

60 station fitness facility consisting of:

- 6 full racks
- 6 lifting platforms
 - Olympic bars
 - Bumper plates
- Heavy duty benches
- Dumbbells upto 60kg
- Plate loaded machines
- 40m track
- Screens for teaching and coaching



OUTDOOR FACILITIES

Located less the 100m away from our International Standard Sport Arena you will find our recently opened £3.5m outdoor sport facility.

The locality of our outdoor provision means that our facility users are able to seamlessly transition from our indoor facilities such as the Performance Zone to one of our National Governing Body accredited artificial surfaces to put the hard work into practice.

Our outdoor facility includes

- Full size football 3G
- Full size Rugby and football compliant 3G
- Sand based Astro turf
- 60m x 40m 3G
- 3 outdoor hard courts
 - Netball
 - Tennis
- A range of grass pitches including football, rugby & lacrosse
- Sport Pavilion
 - 8 Changing rooms
 - 2 officials changing rooms
 - 2 seminar rooms with video & audio capabilities
 - Private treatment room

Detailed floor plans of facilities provided in Appendix



SUPPORT FACILITIES

Supporting the wellness of athletes and members of your organisation is incredibly important and in addition to our training spaces we have created a range of support facilities to provide coaches and athletes with the necessary tools prepare them and compete at the highest level.

TREATMENT ROOMS

We have two private treatment rooms with access to mechanical treatment tables.

With one located in our International Standard Sport Arena and the other in our Outdoor Sport Pavilion it ensures that your athletes and staff have access to a designated medical to compliment your programme.

SEMINAR ROOMS

Two fully equipped teaching spaces within our Sport Pavilion make an ideal environment for coaches, athletes and support staff to review video and refine the programming of your schedule.

These two spaces are connected by a partition wall which can be removed to create one large meeting space with capacity of up to 80-100 dependent on seating arrangement.



OFFICIAL UNIVERSITY PARTNER

ACCOMMODATION

THE COURTYARD

Our contemporary accommodation is perfectly located for attending Events and Conferences at the University of Hull main campus and situated adjacent to Hull Sport Park.

Our standard and deluxe rooms provide en-suite shower facilities with modern, bright interiors, our rooms are arranged in cluster flats of eight standard or four deluxe rooms, with each guest given an access card for the building and their flat corridor upon arrival.

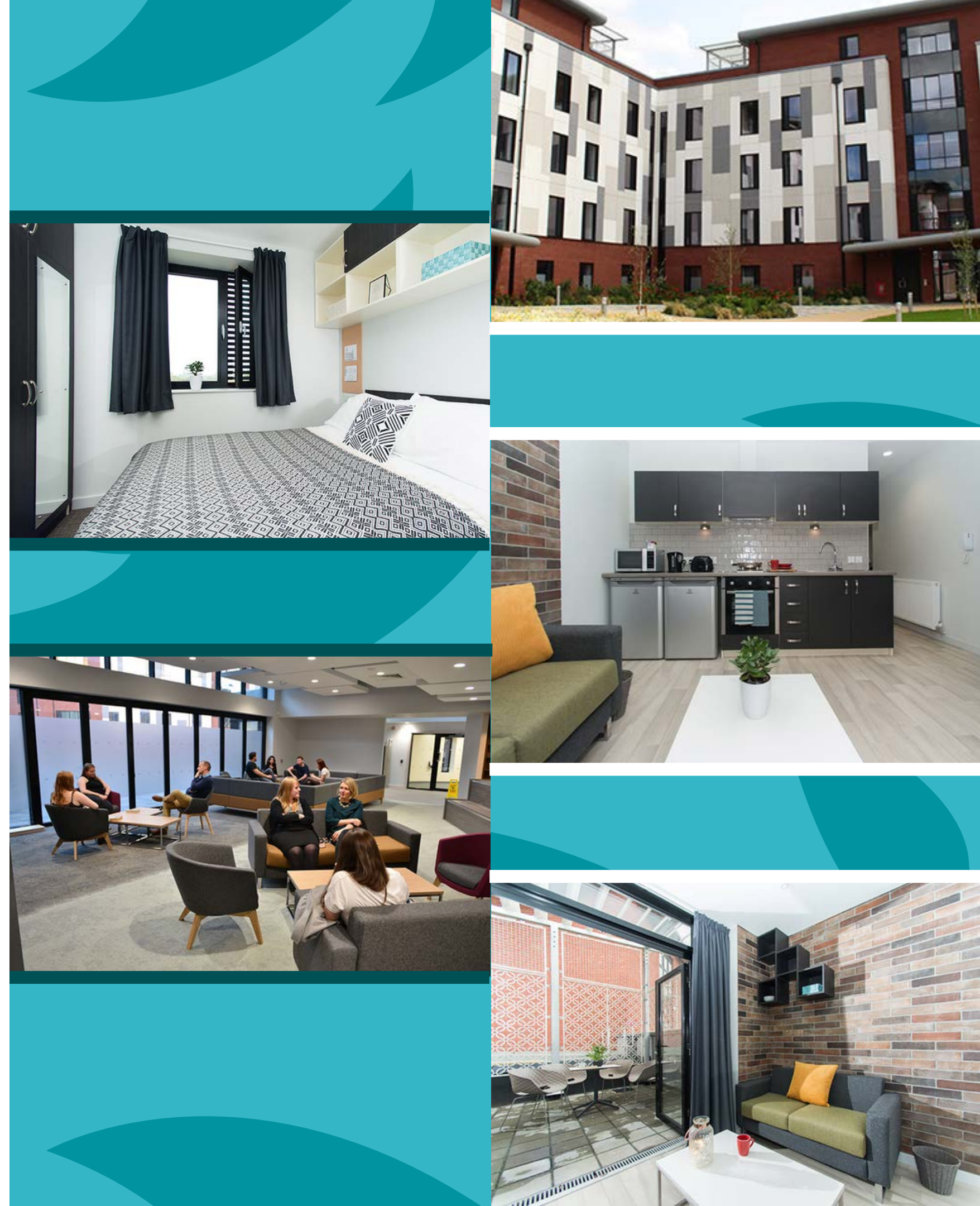
The accommodation is self-catered, shared kitchens are available for each cluster of rooms along with access to a shared quiet seating area.

We also have a number of one-bedroom rooftop apartments which include an outdoor living area with impressive city views and private kitchen and lounge.

Although the accommodation is self-catered and provides access to a shared kitchen, catering can be provided for your group within our central venue Canham Turner offering casual eating arrangements through to fine dining.

ROOM ONLY FROM £45 PER NIGHT*
BED & BREAKFAST FROM £52.50 PER NIGHT**

Prices include VAT and are based on an en-suite flat with shared kitchen and lounge. Full pricing breakdown can be provided upon confirmation of attendees **Breakfast served in Canham Turner





ACCOMMODATION

WESTFIELD COURT

This new £130 million development is a fantastic choice for those attending events and conferences on campus but also for those wishing to explore hull and beyond.

The accommodation is conveniently located within a short walk of our vibrant campus providing easy access to our conference and events facilities, as well as our cafes, theatre and campus shop with Hull Sport Park just a 7 minute walk away.

A range of room types are available, from single en-suites and deluxe bedrooms to one-bedroom apartments, and all of which offer modern, bright interiors.

Although the accommodation is self-catered and provides access to a shared kitchen, catering can be provided for your group within our central venue Canham Turner offering casual eating arrangements through to fine dining.

ROOM ONLY FROM £45 PER NIGHT*
BED & BREAKFAST FROM £52.50 PER NIGHT*

Prices include VAT and are based on an en-suite flat with shared kitchen and lounge. Full pricing breakdown can be provided upon confirmation of attendees **Breakfast served in Canham Turner

CATERING

CANHAM TURNER

Canham Turner is an innovative, creative venue located at the heart of our beautiful main campus located 150m from the Courtyard accommodation and 500m from Hull Sport Park.

Built in 1948, Canham Turner is one of the oldest buildings on campus and houses three on-site eateries.

Take in the elegant surroundings and fine dining experience of the Bronte Brasserie, explore the wide range of meal options in our food hall at the Pantry, or enjoy a Costa Coffee and homemade cake in the comfort of Wildes Cafe.

Catering options can be tailored to your specific requirements which can be served to our Sport Pavilion meeting spaces.

LUNCH FROM £4 PER PERSON
DINNER FROM £6 PER PERSON

further details and costings can be provided upon confirmation of attendees and your specific requirements



OUTREACH

Hull Sport play an imperative role in the local community to inspire future generations to lead an active and enriched lifestyle.

Our team are involved in numerous projects aimed at raising both the activity levels and academic aspirations of those within the region. This is achieved through working with the National Governing Bodies of Rugby League, Football and Squash among others as well working closely with our network of partner schools and colleges.

Our strong partnership network of schools and colleges create some fantastic opportunities to work collaboratively throughout your stay at Hull Sport Park to create a lasting legacy of your time within the region.

Here are some of our key successes in our community outreach projects.

COMMUNITY SPORT PARTNETSHIP

The Community Sport Partnership Project began in 2017 and was an initial two-year partnership between the University of Hull and West Hull Amateur Rugby League club. The overall aim of the project was to raise aspirations and opportunities for young people involved in rugby league from Hull.

the vision of the Community Sport Project was to enhance the social mobility and educational attainment of young people due to their affiliation with Rugby League through the development of cultural, social and sporting capital.

The opportunities and experiences varied to include on campus experience days working with the Hull Sport and University of Hull Sport Science department as well as various activities from professional partner clubs Hull FC and Hull KR that aligned with the project in 2019.

2017-2018 415 LEARNERS
4,392 HOURS OF CONTACT

2019 ENGAGED OVER 25,000
YOUNG PEOPLE ACROSS HULL



TRAVEL TO TOKYO

The University of Hull is the official University Partner of Team GB, the Olympic team run by the British Olympic Association.

In the lead up to the Olympic and Paralympic Games, Hull Sport worked on the delivery of the Travel to Tokyo scheme, which was designed to inspire local schools to become more active and build up the excitement for Tokyo 2020.

The Team organised and delivered a family fun event for local school children and their families to take part in an Olympic themed sports event at Hull Sport Park.

The success of the event was heavily reliant on the partnership work between the University of Hull Schools and Colleges team to secure the attendance of 10 schools from across the city.



PREVIOUS EVENTS & ELITE PARTNERS

THE ALLAM BRITISH OPEN

The Allam British Open sees the top 100 squash players from around the world come together to create one of the flagship events on the Professional Squash Association world tour.

University of Hull has played a role in hosting the Allam British Open for the past 7 years with the 2019 event being the first year of hosting the entirety of the event including knockout stages and both men's and women's finals.

During the tournament our international standard sport arena was converted into 3 areas, the first court providing an entrance space with concession stands from event sponsors and a social space for spectators with fully licensed bar and food outlets. The second space housed a specially constructed glass court with 450 seats and the third area was used by film, lighting and audio crews to televise and stream the event worldwide.

The event also acted as a fantastic platform to engage with local schools and delivering opportunities to meet world class athletes and a glimpse in elite sport. Over the course of the week, we engaged with over 600 local school children.

"The tournament has gone from strength to strength, and the University of Hull's new world-class facilities will provide a fantastic venue for this flagship event."

Keir Worth - England Squash Chief Executive

Broadcast live globally through 11 networks

Facebook reach of 8.3M

2M+ Video views



PREVIOUS EVENTS & ELITE PARTNERS

THE ALLAM BRITISH OPEN

"The Hull Sport Park at the University of Hull was a perfect facility for the Allam British Open. The world-class sport facilities support the needs of our players throughout the event, with great access to elite performance services. The connectivity and amenities of the campus really complemented the event"

Tim Garner | Event Director
Professional Squash Association




HULLSPORT

HULL KINGSTON ROVERS

Hull Kingston Rovers, one of Hull's two professional Rugby League teams have worked in partnership with the University of Hull for over 5 years.

In the build up to the 2019 season Hull Kingston Rovers moved their full pre-season camp to Hull Sport Park.

During the time with us the club held field based training sessions on our artificial surfaces, strength and conditioning and player rehabilitation sessions within our Performance Zone and provided both breakfast and lunches for players throughout their 12 week programme.

Our outdoor Sport Pavilion also acted as a fantastic hub for the coaching team to review training footage captured from our recording platforms while offering a meeting space for the playing group.

The partnership with Hull KR has lead to a number of our students working on placement within the clubs strength and conditioning, rehabilitation and performance analysis departments with several of our placement students progressing to secure full time employment within elite sport.



“The sport facilities at the University of Hull are superb, and really cater for creating an elite sporting environment. From the Performance Zone, the Pavilion and through to the Sport Pitches we had everything we needed. The Campus is great too, with coffee shops and places to eat, it allowed our players some down time in a nice surrounding.”

Tony Smith | Head Coach
Hull Kingston Rovers



HULL KINGSTON ROVERS

MIKE SMITH - CHIEF EXECUTIVE

“The University of Hull have been a long term partner of the club and have provided the club with world class sporting facilities to use whether that be the all-weather surfaces, the strength and conditioning areas, the arena or the meeting rooms.

I know from speaking to our players that they all enjoyed the laid back, relaxed atmosphere on the campus and the mingling with students in the communal areas. As a professional sports club we have a lot of demands and the University of Hull have always met those demands.”



HULLSPORT 



PROJECT MANAGEMENT & STAFFING

At Hull Sport, we pride ourselves on providing an outstanding service to our community. Amongst the team, we have a wide range of expertise, which include:

- Facility Management
- Project and Event Management
- Sport Development including outreach
- Elite Support Service including strength & conditioning and athlete mentoring

Examples include:

- Planning and Delivery of Allam British Open Squash Championships
- English Junior Squash Championship
- Association of Colleges Sport (AOC Sport)- Yorkshire and Humber Regional Event
- England Netball National Playoff Finals

PROJECT AND EVENT MANAGEMENT

EVENT SUPPORT

As a university, we can provide a unique level of support for partners and events, drawing on the expertise and service from the wider campus. The skill and knowledge of our academic staff and students can provide bespoke support from a range of subjects.

Examples include:

- Sport, Health & Exercise Science Department
- Sport Rehabilitation
- Strength & Conditioning
- Coaching and Performance Analysis
- Business and Marketing Department
- Social Media and Marketing Support
- Project Placements
- Digital Media- Photography and Videography





VOLUNTEERING, PLACEMENT AND OTHER OPPORTUNITIES

Hull Sport also work in partnership across campus with several programmes to provide opportunities for our students which will benefit our students and users. These include:

- Hull University Student Union Volunteering – our student union also have a team of volunteers who are always seeking for new voluntary opportunities on campus to add to their student experience
- The Hullfire is the free, official student publication of Hull University Union. Written and edited by students, for students. The Hullfire is ran by a team of volunteers who specialise in radio, marketing and photography



HULL SPORT POLICIES

The University of Hull has a range of robust policies and procedures in place to support our governance and operational requirements; Hull Sport operating within these policies and protocols.

- An overview of some relevant policies are provided in this section, full policies can be provided on request.

EQUALITY, DIVERSITY AND INCLUSION

The University of Hull is committed to promoting equality of opportunity for all, giving every individual the chance to achieve their potential, free from prejudice and discrimination. To make the most of our talent, we need our students and staff to reach their full potential, working effectively with all our teams on campus and partners in delivering a first-rate equality, diversity and inclusion service for all of our people.

- We are building a community that is free from discrimination and unfair treatment. This means the University of Hull is committed to eliminating unlawful discrimination, harassment and victimisation, advancing equality of opportunity and fostering good relations between people with different characteristics.



HULL SPORT POLICIES

HEALTH AND SAFETY

The University of Hull believes that the health, safety and welfare of all at the University is one of its highest priorities. The University is committed to continually improving standards and aims to achieve best practice in health and safety, as a critical part of providing excellence in research, teaching and learning.

SAFEGUARDING

The University of Hull places the highest importance on safeguarding, meaning the safety and wellbeing of students is paramount in all University activities. It is recognised that members of staff and volunteers have an important role to play in ensuring the safety and welfare of those that access the University, in particular children, young people and those deemed to be adults at risk.

The University of Hull is fully committed to undertaking its duties and commitments in respect of safeguarding, in accordance with statutory guidance. The general ethos of the University is that children, young people and adults, are treated with respect and dignity, feel safe and are listened to.

INSURANCE

The University of Hull holds public liability insurance, full details can be provided on request.



COVID 19 STATEMENT

The health, safety and wellbeing of our students, staff and visitors is always our primary concern. We have a robust Covid Secure process in place that aligns with the UK Government and Universities UK Principles and any other relevant governing bodies.

The commitment to our University community is to ensure a fulfilling and safe experience is provided for all new and returning students, staff and visitors.

The health and safety of our University community is our main priority. We will be undertaking regular thorough cleaning and implementing health and safety measures across the campus, this will include hand sanitisers, one-way systems for buildings and clear signage across campus.

Area specific Covid Secure information can be provide upon request or visit <https://www.hull.ac.uk/special/covid-19> for up to date information.

PRICING INFORMATION

INDOOR SPORT FACILITIES

International standard sport arena (per court)	£25
Studio	£18
Performance zone (individual access day rate)	£5
Performance Zone (Private Hire)	£50
Treatment Room	£0
Seminar rooms	£12.50

OUTDOOR SPORT FACILITIES

3G (full pitch)	£44
60m x 40m 3G	£25
Sand based astroturf (full pitch)	£31
Grass pitch	£36.50

All prices at an hourly rate unless stated

ACCOMMODATION & CATERING

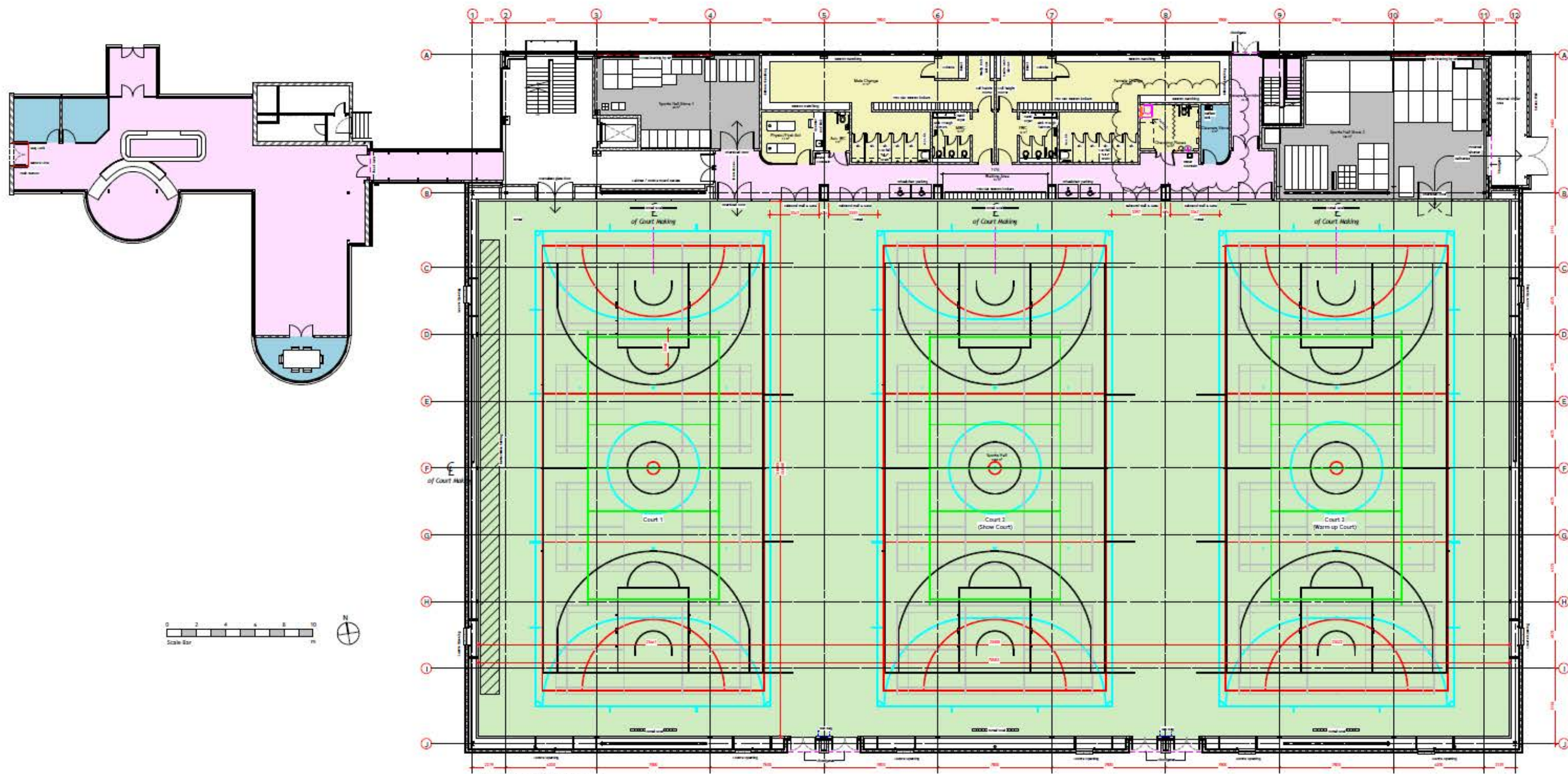
Room only, en-suite, shared kitchen, dining & lounge area*	£45
Above, plus hot breakfast served in Canham Turner	£52.50
Lunch	From £4
Evening meal	From £6

Accommodation & catering prices based on 2020-21 pricing
*per night

Prices provided are to offer an indicative outline of costings. Upon understanding your requirements we are able to refine a bespoke package for your event including various options for catering, accommodation, outreach and supporting services.

APPENDIX 1

ARENA FLOOR PLAN



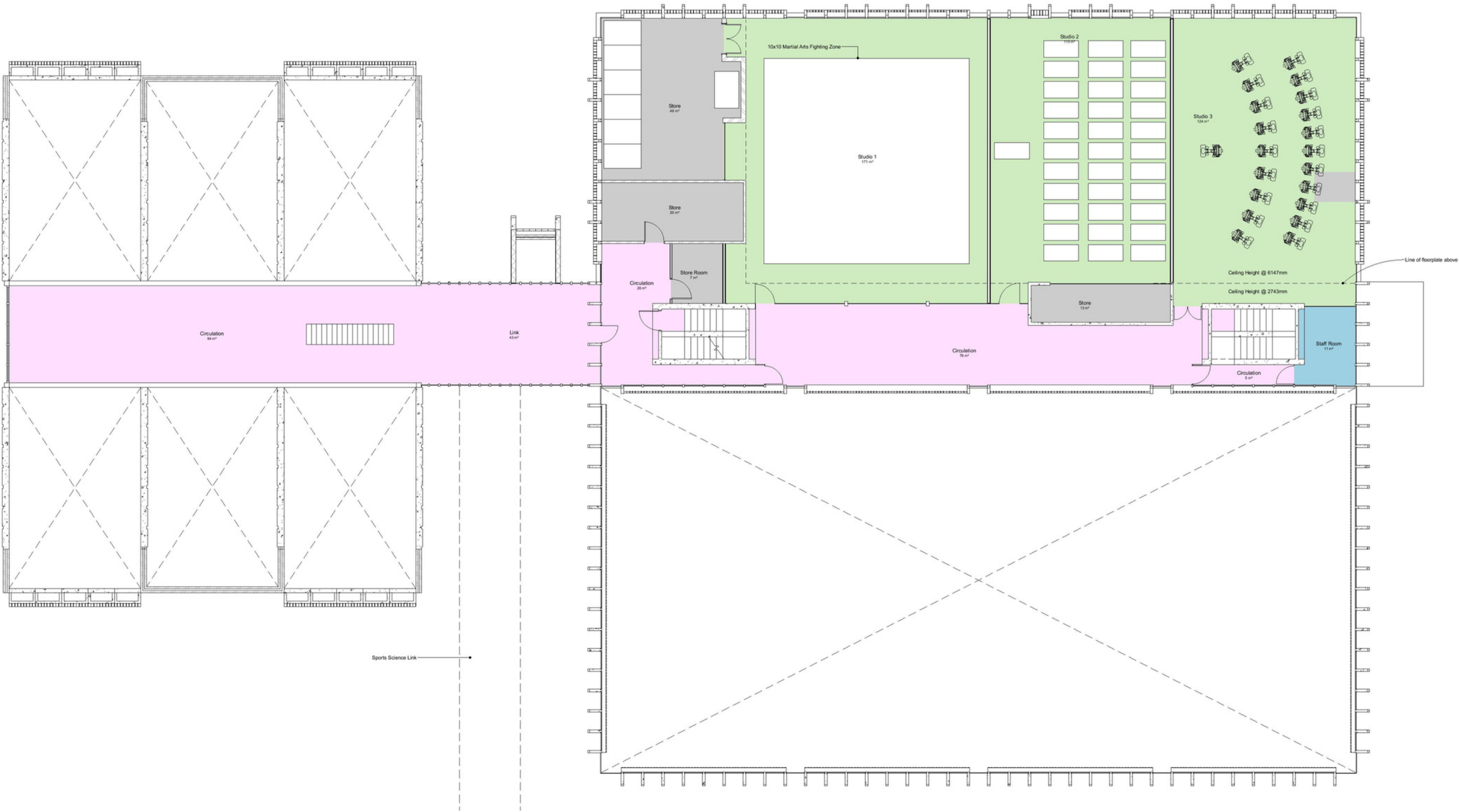
APPENDIX 2

ARENA FLOOR PLAN WITH PERFORMANCE ZONE & SEATING



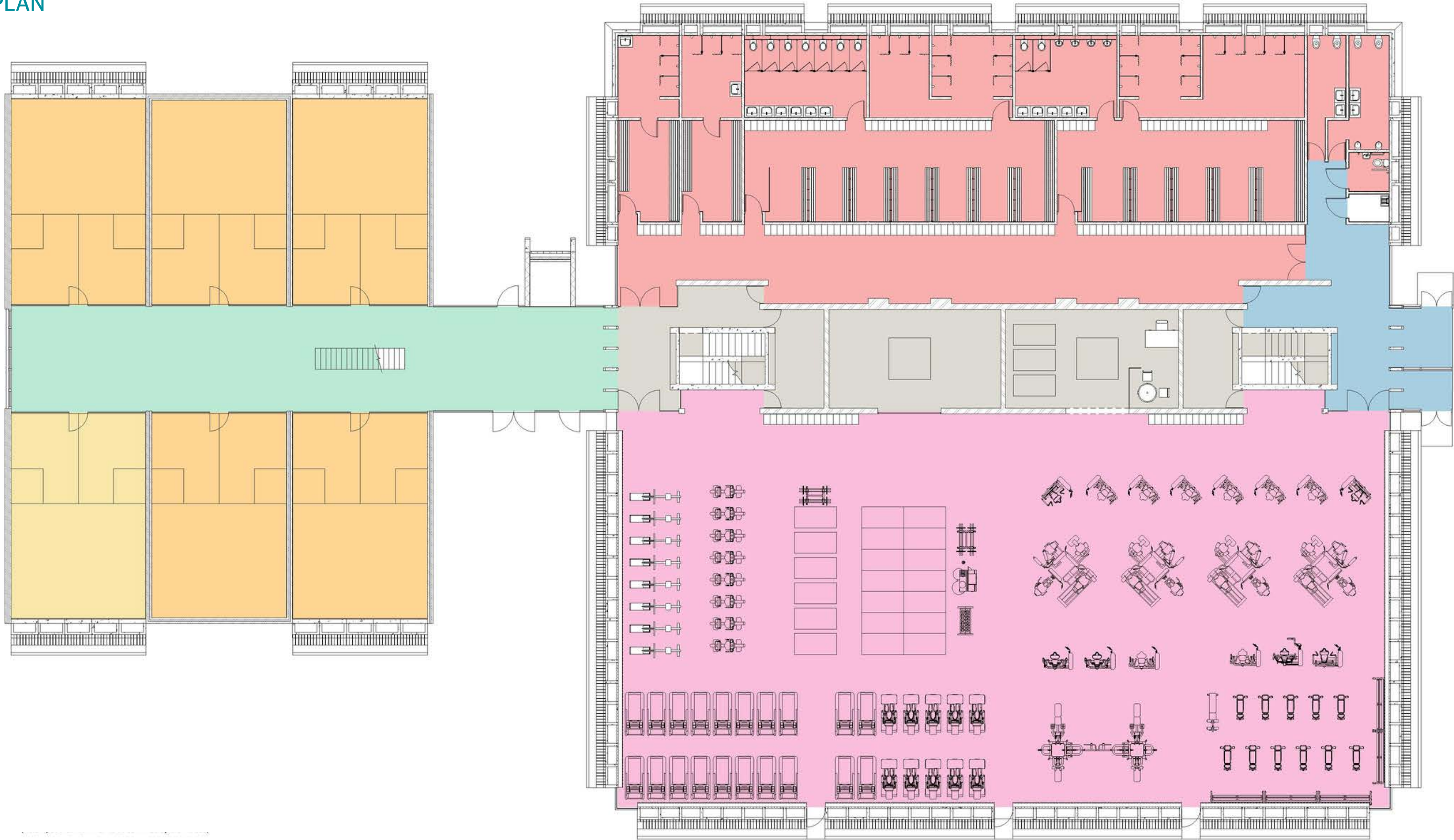
APPENDIX 3

FITNESS FACILITY, STUDIOS & SQUASH COURTS



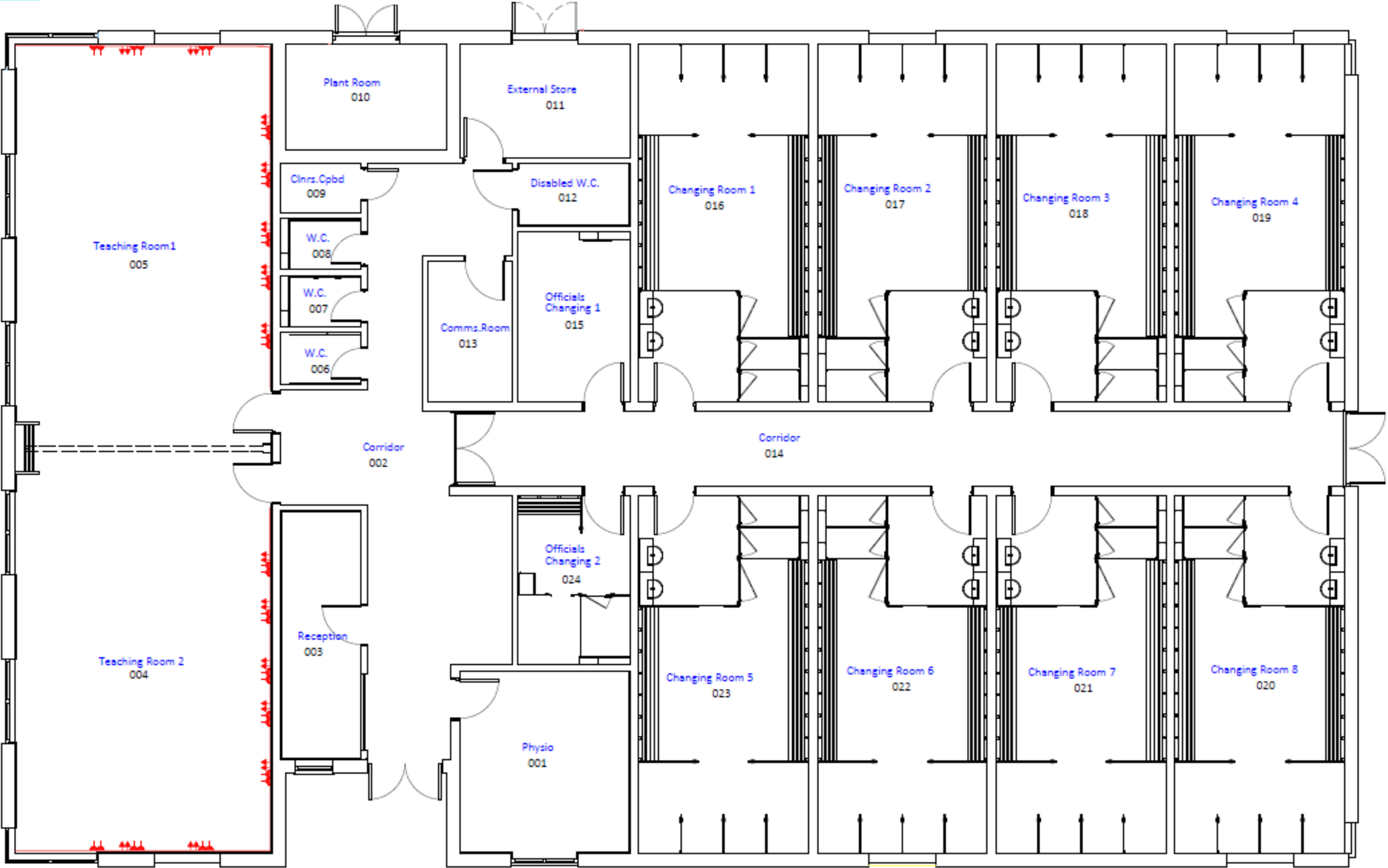
APPENDIX 4

GYM FLOOR PLAN



APPENDIX 5

SPORT PAVILION



THANK YOU



For additional information on events and facilities please contact:

Matt Thompson (Business Development Manager)

01482 466234

m.thompson2@hull.ac.uk